

Settle.



Cromwell Road

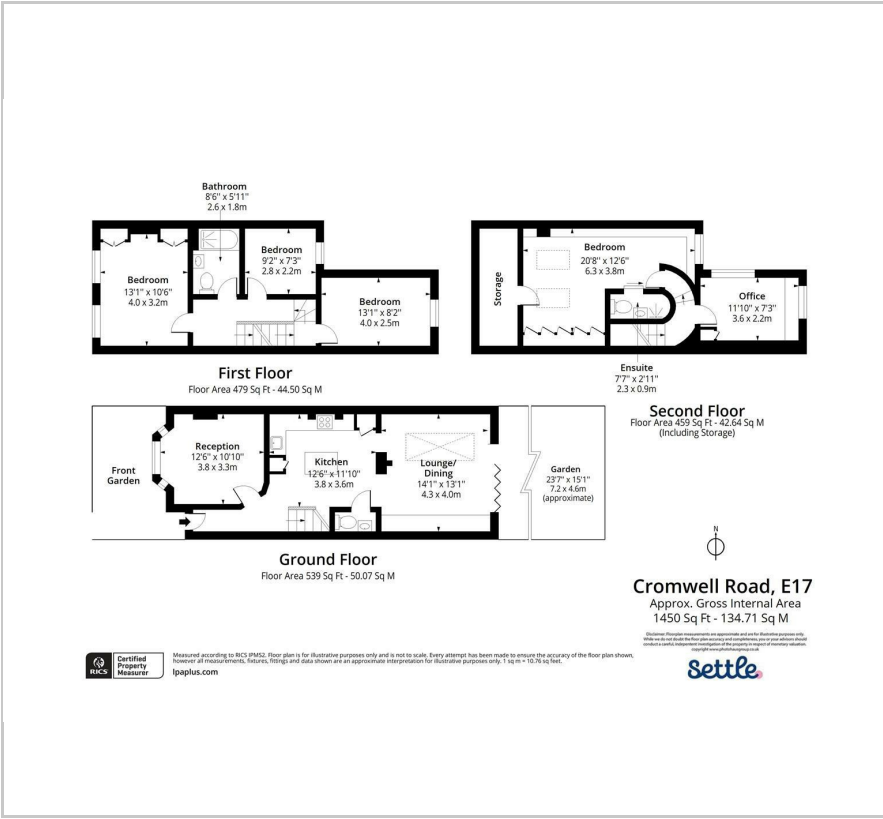
, London, E17 9JN

Offers in excess of £1,000,000



4 2 2

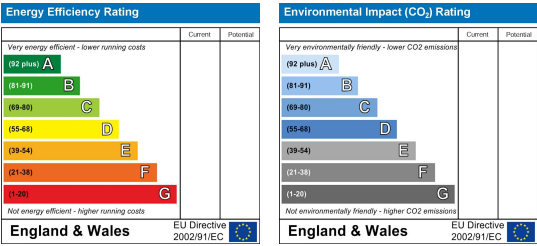
Floor Plan



Area Map



Energy Efficiency Graph



Viewing

Please contact our Settle Office on 0208 124 2522 if you wish to arrange a viewing appointment for this property or require further information.

- Walthamstow Village Location
- Close Proximity To Henry Maynard School
- Beautifully Presented Throughout
- Stunning Converted Loft
- Extended Kitchen/Diner/Family Room
- 0.5m To Walthamstow Central Station
- Private Rear Garden
- Four/Five Bedrooms



A Charming Four Bedroom Family Home in Walthamstow Village.

This beautifully presented four bedroom house proudly sits on a much sought after road in Walthamstow Village and perfectly combines period character with contemporary style. At the front, a bay-fronted lounge features a cast-iron fireplace and stripped wooden floors, while the brick façade adds timeless charm.

The heart of the home is a stylish, fully integrated kitchen with a central island, seamlessly flowing into an extended open-plan dining and family space. A large skylight and bi-folding doors flood this area with natural light, creating the perfect environment for entertaining. A convenient downstairs WC completes the ground floor.

Upstairs, the first floor offers a spacious bedroom to the front with built-in wardrobes, two additional bedrooms, and a family bathroom. The loft conversion adds another sizeable bedroom with an en-suite shower room and generous eaves storage, plus an extra versatile room ideal for a home office or nursery.

Outside, the private, low-maintenance garden features a patio area perfect for alfresco dining and relaxing.



These particulars, whilst believed to be accurate are set out as a general outline only for guidance and do not constitute any part of an offer or contract. Intending purchasers should not rely on them as statements of representation of fact, but must satisfy themselves by inspection or otherwise as to their accuracy. No person in this firm's employment has the authority to make or give any representation or warranty in respect of the property.